

Honda

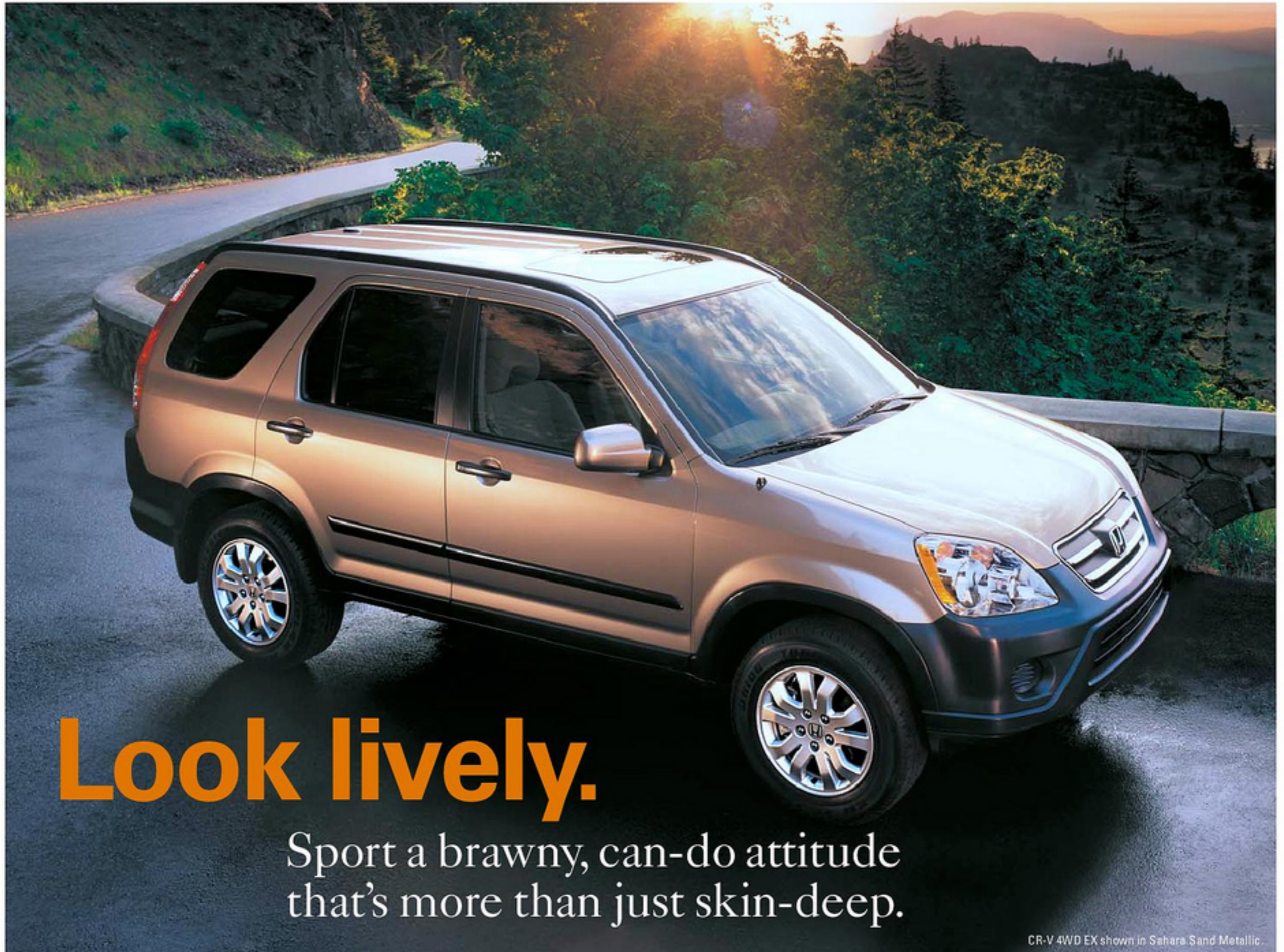
06 CR-V





Get to it.

In a versatile and raring-to-go CR-V,
the points on your map move closer.



Look lively.

Sport a brawny, can-do attitude
that's more than just skin-deep.

CR-V 4WD EX shown in Sahara Sand Metallic.

Tough choices.

Each one a great way to go.



CR-V 2WD LX

- 156-hp, 2.4-liter, 16-valve i-VTEC[®] engine
- 5-speed automatic transmission
- 4-wheel disc brakes with ABS
- Dual-stage, dual-threshold front airbags (SRS)
- Front side airbags with Occupant Position Detection System (OPDS)
- Side curtain airbags with rollover sensor
- Vehicle Stability Assist (VSA[™]) with traction control
- AM/FM/CD/cassette audio system
- Air conditioning with air-filtration system
- Power windows, side mirrors and door locks
- Immobilizer Theft-Deterrent System
- 60/40 split sliding fold & tumble rear seats
- Remote entry system

Wrap the features people need in a reliable and versatile package, and it's no surprise it becomes a favorite. *Consumer Guide*[®] named CR-V a Best Buy in the compact SUV segment for '05. And the *Automotive Lease Guide* gave it their Compact SUV Residual Value Award the same year.² Now it's your turn to pick a winner.

CR-V 4WD LX

Adds to 2WD LX features:

- Real Time[™] 4-wheel-drive system

CR-V 4WD Special Edition (SE)

Adds to or replaces 4WD EX features:

- 5-speed automatic transmission
- Leather-trimmed interior
- Heated front seats
- Heated power side mirrors
- Body-colored bumpers, side molding and door handles
- Body-colored hard spare tire cover

CR-V 4WD EX

Adds to or replaces 4WD LX features:

- 5-speed manual transmission
- Available 5-speed automatic transmission
- AM/FM/XM Ready[™] 1/6-disc in-dash CD changer/cassette audio system with 6 speakers
- Steering wheel-mounted audio controls
- Power moonroof with tilt feature
- 16" alloy wheels, including spare
- Exterior temperature indicator
- Rear privacy glass
- Body-colored power side mirrors



CR-V 4WD Special Edition interior shown in Black Leather.

The CR-V packs lots of luxury within its no-nonsense, capable self. You immediately appreciate its low step-in height and surprising spaciousness. Its plush seats offer a commanding view of the road. Step up to CR-V Special Edition and, along with unique exterior styling cues, you'll also enjoy its supple leather trim, a leather-wrapped steering wheel, heated front seats and heated side mirrors.

An amenity-rich cabin awaits as you activate the remote entry system that's integrated with the key. Inside every CR-V, you'll enjoy a host of standard features reflecting Honda quality. And the Immobilizer Theft-Deterrent System can help keep it all secure.



An available moonroof freshens the drive.



Cruise control: an easy way to thumb a ride.

Load up.

It's great to get all the goods.



Get standard power windows and mirrors.



Sound solutions – from CDs to XM readiness.¹

Completely comfortable.

Automotive experts like to say that the CR-V cabin is "well-appointed." That just means it has all the things you want – like comfortable seating, ergonomically positioned controls, quality materials and pleasing extras like air conditioning with air filtration to minimize dust and pollen.

A higher form of radio.

Get over 150 channels of digital-quality sound when you equip your XM Ready¹ EX or SE with an accessory XM Satellite Radio¹ receiver. All music channels are commercial-free. Plus, you can get traffic and weather info in most major U.S. cities as well.



The CR-V has but one goal: to help you accomplish your goals, whatever they may be. So we built it to be amazingly versatile and adaptable. There's room for up to five adults, loads of different storage and seating configurations, and a lot of room for cargo, too.³

Undeniable utility.

Step inside and the CR-V is at the ready with a host of bins and door pockets, beverage holders for folks both in front and in the back, and even front and rear 12-volt power outlets. And there are plenty of tie-down anchors to keep things secure.



The swing-up glass hatch eases access.

Work it out.

Tough tasks made easy.



Forget the rack – just load in your bikes.*



The retractable center tray can make way.



Big storage bins keep things close at hand.

Life in a CR-V really can be a picnic.

Pull out the rear storage well cover and extend its legs and you have a handy, go-anywhere picnic table. Or card table. Or work table. It's just one example of smart CR-V versatility and utility. When it's out, you have access to another thoughtful touch – a large waterproof storage bin.



*Honda reminds you to properly secure items stored in the cargo area.



CR-V 4WD EX interior shown in Ivory.



60/40 split decisions.

The 60/40 split rear seats can help you carry people and cargo in a variety of combinations.³ The seats each slide and recline independently, so you can carry a lot of gear along with a rear passenger or two. Tumble both seats forward to open up a remarkable 72 cu. ft. of cargo room.³

Run with it.

CR-V is all about good, clean fun.



CR-V 4WD Special Edition shown in Pewter Pearl.



Honda does engines lean and mean.

The heart of CR-V's fuel efficiency* and strength is an aluminum-alloy engine block. It's the lightweight starting point for a highly advanced drivetrain full of heavy-duty Honda thinking.

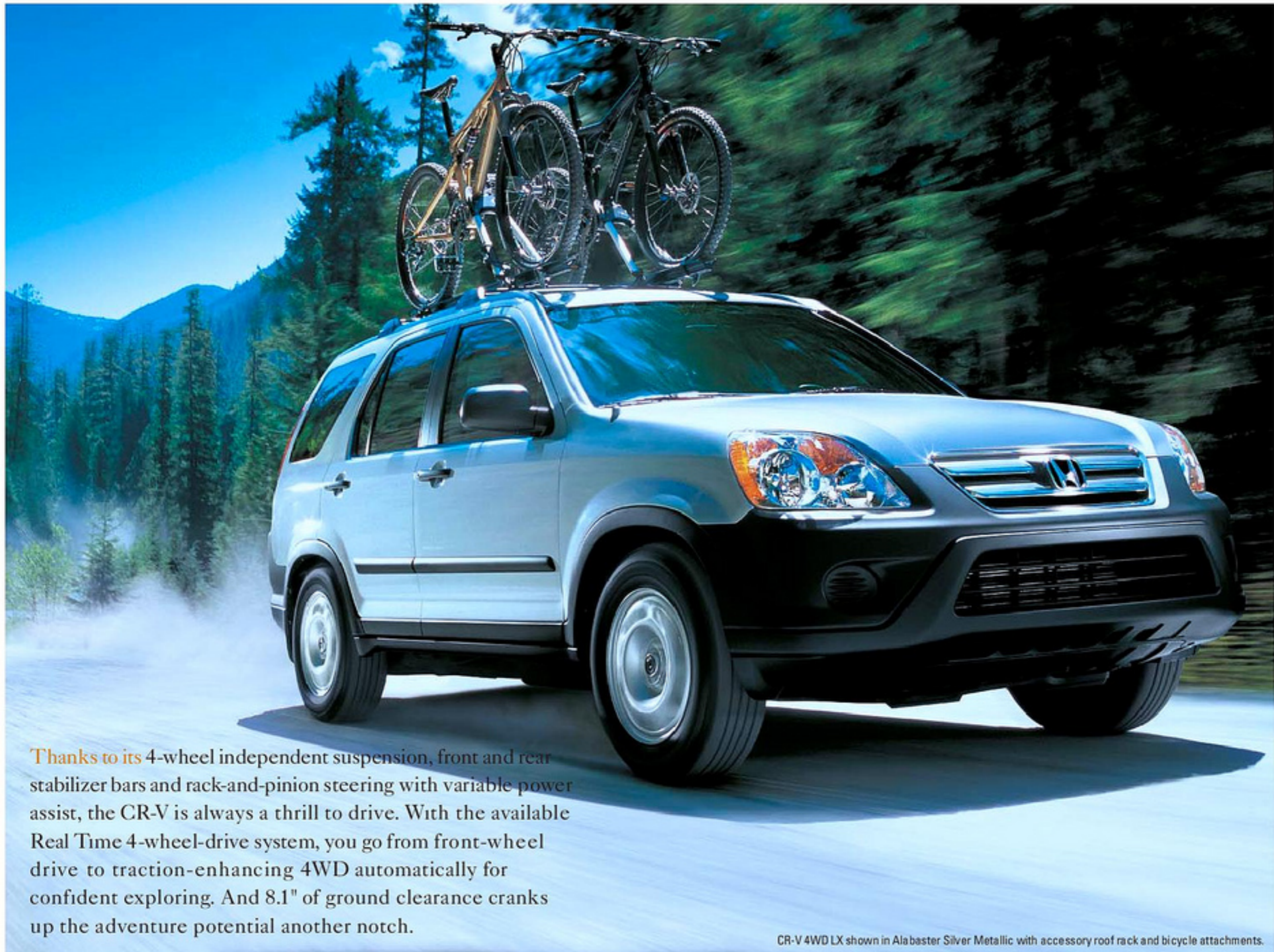
Transmission choices.

A silky smooth 5-speed automatic transmission is standard on LX and SE models, and available on EX models. Or go with the EX model's standard, fun-to-shift 5-speed manual transmission.

Complex technology for easy power.

The i-VTEC system uses variable valve timing and lift, variable timing control (VTC), dual overhead camshafts and 4 valves per cylinder to maximize power and efficiency at all engine speeds.

Honda engines are the stuff of legend, blending durability and reliability with an irrepressible fun-to-drive spirit. The CR-V is no exception – its 156-hp engine delivers rousing performance as well as impressive fuel efficiency* for an SUV. Plus, all CR-V models get a Low-Emission Vehicle (LEV-2) rating.



Thanks to its 4-wheel independent suspension, front and rear stabilizer bars and rack-and-pinion steering with variable power assist, the CR-V is always a thrill to drive. With the available Real Time 4-wheel-drive system, you go from front-wheel drive to traction-enhancing 4WD automatically for confident exploring. And 8.1" of ground clearance cranks up the adventure potential another notch.

CR-V 4WD LX shown in Alabaster Silver Metallic with accessory roof rack and bicycle attachments.



Crash test conducted by Honda.

Ready yourself.

Safety for Everyone.

Crashing cars can save lives.

At Honda, we're focused on the continued development of industry-leading safety systems. Our new research facility in Ohio features the world's most advanced high-resolution crash barrier. And our center in Tochigi, Japan, houses the world's first indoor all-directional crash-test facility.



Stay the course.

In an oversteer or understeer condition, a standard Vehicle Stability Assist (VSA) system automatically regulates the brakes and/or throttle to help keep the vehicle on the intended path of travel. And standard anti-lock braking (ABS) helps to maintain steering control during hard braking.

Honda's philosophy of **Safety for Everyone** is seen in how every CR-V comes complete with side curtain airbags, anti-lock brakes (ABS) and our Vehicle Stability Assist (VSA) system. It's a thorough array of features that has earned it a 5-star front and side crash-test rating—the highest possible.*



*National Highway Traffic Safety Administration frontal and side-impact crash test, May 2002. Model tested with standard side-impact airbags (SABs). Government star ratings are part of the National Highway Traffic Safety Administration's (NHTSA) New Car Assessment Program (NCAP), found at Safercar.gov.
†Honda reminds you and your passengers to always buckle up. Children 12 and under are safest when properly restrained in the rear seat.



Head and shoulders above the rest.

Side curtain airbags can help reduce or prevent head injuries in a sufficient side impact. The Lower Anchors and Tethers for Children (LATCH) system makes it easier to install compatible child seats.

They know when they're not needed.

The passenger's standard front side airbag features an Occupant Position Detection System (OPDS) that will prevent deployment if a child or small-statured person is out of position and in the deployment path.

Airbags that do what's called for.

The standard front airbags* deploy at one of two rates and thresholds, depending on the severity of the impact and seat-belt use.

Front airbags inflate and deflate in a fraction of a second.

Protection without, protection within.

The rigid safety cell is reinforced with high-tensile steel and numerous cross braces to help stop cabin deformation. And front and rear crumple zones deform in a controlled manner to help absorb crash energy before it even has a chance to intrude into the passenger cabin.

Higher tech.

Dreams are our drawing board.



Honda Motor Co. was founded in 1948 to help people get around. We quickly became one of the world's top motorcycle makers – the first of our many successes. **Listening to people** and understanding their needs has always been first. So we develop and build many products where they're used. Safety, reliability, Earth-friendliness and **driving fun** are must-haves. And we believe in the power of **ingenious** thinking to make great things possible.



We're always looking ahead.

Honda's ASIMO is the world's most advanced humanoid robot. And Honda has joined with GE – world's largest maker of jet engines – to bring the Honda-developed HF118 jet engine to market.



At Honda, we're working full time to make Safety for Everyone.

Through a comprehensive and evolving approach to vehicle safety, Honda seeks to provide a high level of occupant and pedestrian protection in our cars and trucks, regardless of size or price, as well as increased crash compatibility with other vehicles.



Over 27,500 American associates pitch in. Honda has assembled cars in the U.S. since 1982. Today, close to 4 out of 5 Honda vehicles sold in the U.S. are assembled in North America – with the help of over 550 U.S. supplier companies.



Power up.

Our generators, outboard motors, motorcycles, lawnmowers, tillers, pumps, snowblowers, cars, trucks and more add up to making Honda the world's largest manufacturer of engines. And every one of them performs like, well, a Honda.



We're not afraid of the water.

Between our highly regarded AquaTrax personal watercraft and our lineup of outboards from 2 to 225 hp, Honda gives you plenty of ways to enjoy the wet stuff.



We have a clear edge.

Honda has long led the way in making Earth-friendlier cars. The latest is our advanced zero-emission FCX fuel-cell car—the first certified for U.S. commercial use. And for the third year in a row, Honda has been named the “Greenest Automaker” by the Union of Concerned Scientists.⁵



“A company is most clearly defined neither by its people nor by its history, but by its products. Our products will speak the truth about Honda.”

Soichiro Honda, Founder, Honda Motor Co., Ltd.



Sometimes it's good to get dirty.

Honda began racing motorcycles in the 1950s and cars in the '60s. Over the years, our vehicles have proven their grit time and again. In fact, Honda is the most winning nameplate in the history of the SCORE Baja 1000 desert race. And while the toughness and technology are certainly reflected in our production vehicles, we think the greatest benefit of racing is how it prepares our engineers to be creative under pressure.



Engineering	2WD LX	4WD LX	4WD EX/SE
Engine Type	In-Line 4-Cylinder	In-Line 4-Cylinder	In-Line 4-Cylinder
Engine Block/Cylinder Head	Aluminum-Alloy	Aluminum-Alloy	Aluminum-Alloy
Displacement (cc)	2354	2354	2354
Horsepower@ rpm (SAE net, Rev B/04) [†]	156 @ 5800	156 @ 5800	156 @ 5800
Torque (lb.-ft. @ rpm) [†]	160 @ 3600	160 @ 3600	160 @ 3600
Valve Train i-VTEC [‡]	16-Valve DOHC i-VTEC	16-Valve DOHC i-VTEC	16-Valve DOHC i-VTEC
Multi-Point Fuel Injection	*	*	*
Drive-by-Wire Throttle System ^{††}	*	*	*
Real Time ^{††} 4-Wheel Drive	*	*	*
CARB Emissions Rating	LEV-2	LEV-2	LEV-2
Direct Ignition System with Immobilizer	*	*	*
110,000-Mile Tune-Up Interval [†]	*	*	*
Transmissions			
5-Speed Manual Transmission (Standard)			EX
5-Speed Automatic Transmission (Available)			EX
5-Speed Automatic Transmission (Standard)	*	*	SE
Body/Suspension/Chassis			
Unit-Body Construction	*	*	*
MacPherson Strut Front Suspension	*	*	*
Multi-Link Double Wishbone Rear Suspension	*	*	*
Stabilizer Bar (mm, front/rear)	27.2/14.0	27.2/14.0	27.2/14.0
Variable Power-Assisted Rack-and-Pinion Steering	*	*	*
Power-Assisted 4-Wheel Disc Brakes	*	*	*
Wheels	16" Styled Steel	16" Styled Steel	16" Alloy
All-Season Tires (M+S)	P215/65 R16 (M+S)	P215/65 R16 (M+S)	P215/65 R16
Exterior Measurements			
Wheelbase (in.)	103.3	103.3	103.3
Length (in.)	181.0	181.0	181.0/181.8
Height (in.)	66.2	66.2	66.2
Width (in.)	70.2	70.2	70.2
Track (in., front/rear)	60.4/60.8	60.4/60.8	60.4/60.8
Minimum Ground Clearance (in.)	8.1	8.1	8.1
Curb Weight (lbs., MT/AT)	NA/3318	NA/3428 NA/3494 (SE)	3406/3472 (EX)
Towing Capacity (lbs.)	1500	1500	1500
Interior Measurements			
Headroom (in., front/rear)	40.9/39.1	40.9/39.1	38.9/39.1
Legroom (in., front/rear)	41.3/39.4	41.3/39.4	41.3/39.4
Shoulder Room (in., front/rear)	56.9/56.5	56.9/56.5	56.9/56.5
Hiproom (in., front/rear)	54.5/53.5	54.5/53.5	54.5/53.5
Cargo Volume [‡] (cu. ft., seat up/down)	33.5/72.0	33.5/72.0	33.5/72.0
Passenger Volume (cu. ft.)	106.0	106.0	103.3
Seating Capacity	5	5	5
EPA Mileage Estimates/Fuel Capacity			
5-Speed Manual (City/Highway)			21/26 (EX)
5-Speed Automatic (City/Highway)	23/29	22/27	22/27
Fuel (gal.)	15.3	15.3	15.3
Seating			
Driver's Seat with Manual Height Adjustment	*	*	*
60/40 Split Sliding Fold & Tumble Rear Seats	*	*	*
Reclining Front and Rear Seatbacks	*	*	*
Head Restraints at All Seating Positions	*	*	*
Leather-Trimmed Seats and Door-Panel Inserts			SE
Heated Front Seats			SE
Audio Systems			
AM/FM/CD/Cassette Audio System with 4 Speakers	*	*	
AM/FM/XM Ready ^{†††} /6-Disc In-Dash CD Changer/ Cassette Audio System with 6 Speakers			*

[†]Horsepower and torque calculations reflect new SAE J1349 procedures revised August, 2004.
^{††}Does not apply to fluid and filter changes. See your owner's manual for details.

Safety	2WD LX	4WD LX	4WD EX/SE
3-Point Seat Belts at All Seating Positions	*	*	*
Front 3-Point Seat Belts with Automatic Tensioning System	*	*	*
Adjustable Front Seat Belt Anchors	*	*	*
Dual-Stage, Dual-Threshold Front Airbags (SRS)	*	*	*
Front Side Airbags with Passenger-Side Occupant Position Detection System (OPDS)	*	*	*
Side Curtain Airbags with Rollover Sensor	*	*	*
Anti-Lock Braking System (ABS)	*	*	*
Electronic Brake Distribution (EBD)	*	*	*
Vehicle Stability Assist (VSA [†]) with Traction Control	*	*	*
Side-Impact Door Beams	*	*	*
Lower Anchors and Tethers for Children (LATCH)	*	*	*
Child-Proof Rear Door Locks	*	*	*
Immobilizer Theft-Deterrent System	*	*	*
Comfort & Convenience			
Air Conditioning with Air-Filtration System	*	*	*
Power Windows with Auto-Up/Down Driver's Window	*	*	*
Power Door and Tailgate Locks	*	*	*
Cruise Control	*	*	*
Leather-Wrapped Steering Wheel			SE
Steering Wheel-Mounted Audio Controls			*
Retractable Center Tray Table	*	*	*
Driver's and Front Passenger's Vanity Mirrors	*	*	*
Sunglasses Holder	*	*	*
Adjustable Steering Column	*	*	*
Beverage Holders, Front and Rear	*	*	*
12-Volt Power Outlets, Front and Rear	*	*	*
Rear Window Defroster	*	*	*
Rear-Seat Heater Ducts	*	*	*
Rear Mats	*	*	*
Removable Folding Picnic Table	*	*	*
Waterproof Rear Storage Well	*	*	*
Cargo Area Tie-Down Anchors (4 total)	*	*	*
Cargo Area Hooks	*	*	*
Cargo Area Light	*	*	*
Remote Glass Hatch Release	*	*	*
Exterior Features			
Power Moonroof with Tilt Feature			*
Remote Entry System	*	*	*
Multi-Reflector Halogen Headlights	*	*	*
2-Speed/Intermittent Windshield Wipers	*	*	*
Heat-Rejecting Green-Tinted Glass	*	*	*
Power Side Mirrors	*	*	Body-Colored
Heated Power Side Mirrors			SE
Alloy Wheels	Accessory	Accessory	Including Spare
Body Side Molding	*	*	Body-Colored on SE
Body-Colored Bumpers and Door Handles			SE
Full-Swinging Tailgate Door with Integrated Glass Hatch	*	*	*
Tailgate-Mounted Full-Size Spare Tire with Cover	*	*	*
Body-Colored Hard Spare Tire Cover			SE
Rear Privacy Glass			*
Instrumentation			
Tachometer	*	*	*
Exterior Temperature Indicator			*
Door-/Tailgate-Open Indicator	*	*	*
Low-Fuel and Oil-Pressure Indicators	*	*	*

Exterior/Interior Colors	2WD LX	4WD LX	4WD EX	4WD SE
Alabaster Silver Metallic	Black	Black	Black	
Nighthawk Black Pearl	Black	Black	Black	Black Leather
Powder Pearl				Black Leather
Redondo Red Pearl	Ivory	Ivory	Ivory	
Royal Blue Pearl	Black	Black	Black	
Sahara Sand Metallic	Ivory	Ivory	Ivory	Ivory Leather
Silver Moss Metallic	Black	Black	Black	
Taffeta White	Ivory	Ivory	Ivory	Ivory Leather



CR-V EX SPORT PACKAGE

This dealer-installed package pumps even more sporty style into your new CR-V. It includes a roof rack, twin fog lights and a pair of tough, handsome running boards.



CR-V LX CONVENIENCE PACKAGE

This is a quick and easy way to add a healthy dose of extra value to your CR-V purchase, with 16" alloy wheels, a cargo cover and a center armrest.

[†]Required XM subscription sold separately after three trial months. All fees and programming subject to change. Subscriptions subject to Customer Agreement available at xmradio.com. Standard audio system is pre-wired to accept the dealer-installed accessory XM Satellite Radio hardware. XM service only available in the 48 contiguous United States. The XM name and XM Ready are registered trademarks of XM Satellite Radio Inc. [‡]2005 Consumer Guide, Consumer Guide[®] is a registered trademark of Publications International, Ltd. 2005 Automotive Lease Guide. ^{††}Carrying too much cargo or improperly storing it can affect the handling, stability and operation of this vehicle. Before carrying any cargo, be sure to consult the owner's manual for load limits and loading guidelines. ^{†††}Based on 2006 EPA mileage estimates. Use for comparison purposes only. Actual mileage may vary. ^{††††}Union of Concerned Scientists: 2004. ^{†††††}**3-Year/36,000-Mile Limited Warranty, 5-Year/60,000-Mile Limited Powertrain Warranty.** Ordinary maintenance or adjustments, parts subject to normal wear and replacement, and certain items are excluded. See your Honda dealer for the terms and conditions of the limited warranties. **Always use seat belts and appropriate child seats. Children 12 and under are safest when properly restrained in the rear seat.** Specifications, features, illustrations and equipment shown in this brochure are based upon the latest available information at the time of printing. Although descriptions are believed correct, accuracy cannot be guaranteed. American Honda Motor Co., Inc., reserves the right to make changes at any time, without notice or obligation, in colors, specifications, accessories, materials and models. Some features mentioned herein are not available in all areas. See your Honda dealer for details. Some vehicles may be shown with optional equipment. Available = Optional. NA = Not applicable. All images contained herein are either owned by American Honda Motor Co., Inc., or used under a valid license. It is a violation of federal law to reproduce these images without express written permission from American Honda Motor Co., Inc., or the individual copyright owner of such images. Honda Financial Services is a DBA of American Honda Finance Corporation. Honda, the H-mark symbol, Honda Care, Drive-by-Wire Throttle System, i-VTEC, Real Time and VSA are trademarks of Honda Motor Co., Ltd. © 2005 American Honda Motor Co., Inc.



Your dealer's team of trained technicians is at the ready to help keep your Honda in superb shape. All 2006 Honda vehicles—and any Genuine Honda Accessories installed at the time of purchase—are covered by the 3-year/36,000-mile New-Vehicle Limited Warranty.⁶ Plus, Honda cars and trucks are covered by a 5-year/60,000-mile Limited Powertrain Warranty, too. For more information or assistance, see your Honda dealer or please give us a call at 1-800-33-Honda.



Ridgeline



Pilot



Element



CR-V

HONDA

Financial Services

Whether you buy or lease a Honda vehicle, Honda Financial Services can assist you with the process. Please ask your dealer which lease or purchase plan best suits your needs.

HONDA

Care

Honda Care™ is a highly affordable, comprehensive vehicle and travel protection plan backed by Honda reliability, service and parts. Please see your dealer for all the details.



HONDA

honda.com